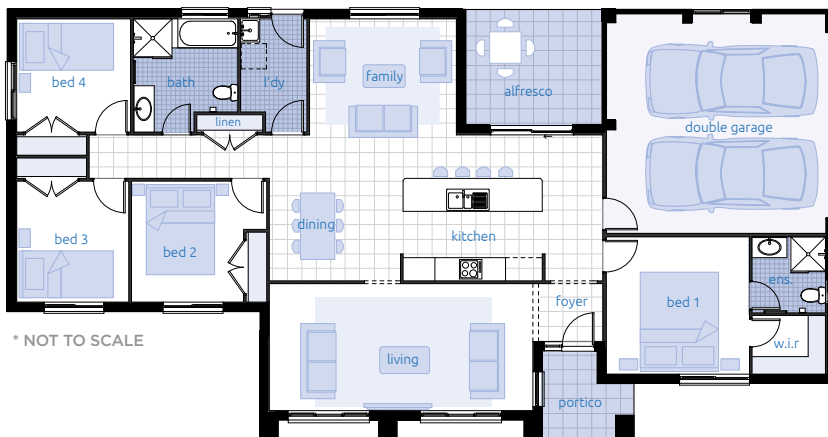




Norfolk GEN 1 F2.1



* ARTISTS IMPRESSION



* NOT TO SCALE

Living	166.0 m ²
Garage	34.6 m ²
Patio	4.6 m ²

Total **205.2 m²**

Overall Width	21.4 m
Overall Length	11.1 m

DISCLAIMER

Photographs and other images in this brochure may show fixtures, fittings or finishes which are not supplied by Thomas Paul Constructions, or which are only available in some designs when selected as upgrades from the standard design. This may include landscaping and outdoor items, floor coverings, furniture, kitchen, bathroom and light fittings and decorative items which are shown as examples only. Please speak to one of our sales consultants to discuss detailed home pricing for different designs and inclusions.